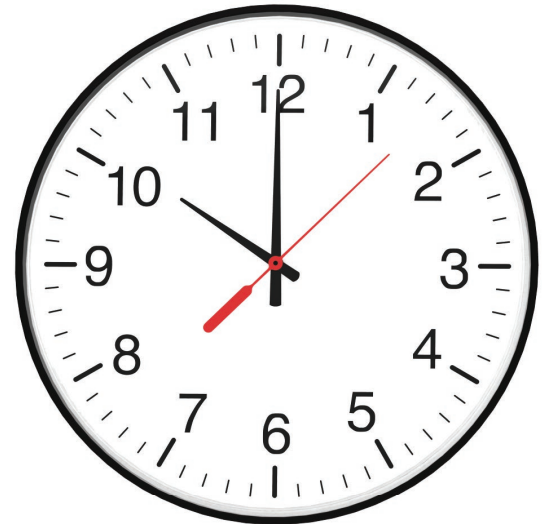


SSIAW Series Wi-Fi Round Clock (V1.3)

Features:

- Available in 9" (22.8cm), 12" (30.4 cm), and 16"(40.6 cm) dial sizes
- Offered in a SlimLine ABS case
 - Optional Cherry Wood finish or Brushed Aluminium finish
- Multiple power options
 - Offered in 230VAC & battery-powered models
- Provided with mounting hardware for easy installation
- Hour, minute, and second hands
- Quick correction for time change (max. 5 minutes)
- Internal Antenna
- Microprocessor based movement
- Side molded, polycarbonate crystal
- FCC Compliant per FCC part 15 Section 15



Highlights:

- Built-in web interface - each clock has a built in web interface allowing the user to set, control, and monitor the Wi-Fi clock
 - Settings include: Network settings, NTP server selection, UTC/GMT offset selection (-5 default), automatic Daylight Saving Time adjustments (US default), and much more!
- Receives time data from one of five pre-programmed third party NTP servers (user changeable) for added reliability and redundancy. Alternatively, it can be set to receive the time data from an in-house NTP Server or from any Simplex Master Clock model.
- Built-in self-diagnostics for:
 - NTP Synchronization Timeouts
 - Power resets
 - Hand position errors and corrections
- Direct-connect mode allows users to configure the clock wirelessly before connecting it to a Wireless Network.
- Adjustable synchronization rate to reduce electricity costs.
 - Battery: 12 hours default. 2/8/12/24 hours adjustable.
 - Locally powered: 5 minutes default. 0.25/0.5/1/4/12/24 hours adjustable.
- Custom Color Cases available (minimum quantity 25)
- Designed and Produced in United States of America

Specification sheets may change without prior notice

SSIAW Series Wi-Fi Round Clock (V1.3)

Specifications:

Case Material:

Acrylonitrile Butadiene Styrene (ABS)
 Cherry wood finish or brushed aluminum finish for the SlimLine ABS case are also available

Case Color:

Standard black finish (custom colors available)

Dial Face:

12 or 24 (military) hour standard
 Specialty dials available

Dial Material:

Polyvinyl Chloride (PVC)

Crystal Material:

Shatter-proof, side-molded, transparent polycarbonate

Voltage Input:

Two 1.5V "D" Cell Alkaline Batteries (Battery model)
 180 - 260 VAC 50/60 Hz (230V model)

Average Current Consumption:

Battery - 5 - 7 years (affected by frequency of updates)
 5 mA @ 230VAC Maximum

Compatible Wi-Fi Communication Protocols:

802.11 b/g/n (2.4GHz only)

Compatible Security Protocols:

WEP, WPA/WPA2, PEAPv0 (MSCHAPv2),
 EAP-FAST, LEAP

Hand tolerance:

Minute hand: +/- 1/4 minute
 Second hand: +/- 1/2 second

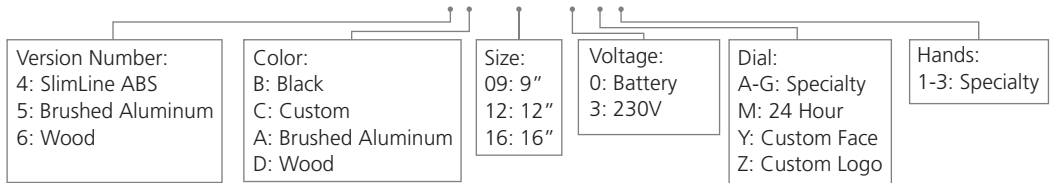
Temperature range:

Operating: 14°F - 122°F (-10°C - 50°C)
 Shelf: -4°F - 131°F (-20°C - 55°C)

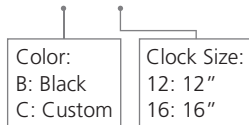


Ordering Information:

SSIAW Series Wi-Fi Round Clock: SSIWA-XXS-XXR-X-XX



Double Mount Housing: SAH-1XD-XXR-0



Note: Purchasing double mounted round analog clocks will require two clocks using the clock part number and one double mount housing using the part number above.

*Note: SlimLine and Aluminum clocks use the SlimLine Adapter.

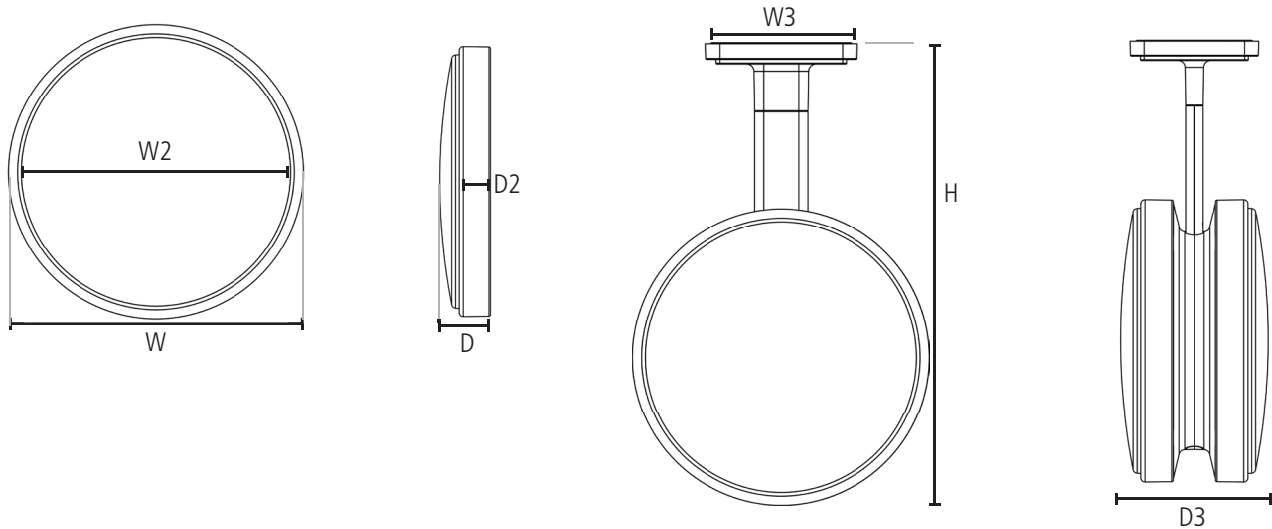
Examples:

SSIAW-5AS-09R-0 Simplex Analog, Wi-Fi SlimLine, 9" Round, Battery-Operated, Surface Wall Mount, Brushed Aluminum Case
 SSIWA-6DS-16R-3 Simplex Analog, Wi-Fi SlimLine, 16" Round, 230 VAC, Surface Wall Mount, Solid Cherry Wood Frame

specification sheets may change without prior notice

SSIAW Series Wi-Fi Round Clock (V1.3)

Simplex Round Analog Clock Dimensions



SLIMLINE ABS

Clock Size:	9" SlimLine	12" SlimLine	16" SlimLine
W	9.8" (24.8cm)	12.9" (32.7cm)	16.7" (42.3cm)
W2	9.5" (24.2cm)	12.6" (32.0cm)	16.3" (41.5cm)
D	2.4" (6.2cm)	2.4" (6.2cm)	2.5" (6.4cm)
D2	1.7" (4.2cm)	1.7" (4.3cm)	1.7" (4.4cm)
Shipping Weight:	2 lbs (0.9 kg)	2 lbs (0.9 kg)	4 lbs (1.8 kg)
Double/Dual Mount Dimensions:	Not Applicable	W3 = 6.6" (16.7cm) D3 = 6.4" (16.2cm)	W3 = 6.6" (16.7cm) D3 = 6.4" (16.3cm)
Adjustable Pole Height:	Not Applicable	H = 19.7" (50.2cm) = 18.1" (46.1cm) = 16.5" (41.9cm)	H = 21.7" (55.3cm) = 20.1" (51.2cm) = 18.5" (47.0cm)

ALUMINUM

WOODEN

Clock Size:	9" Aluminum	12" Aluminum	16" Aluminum	9" Wood	12" Wood	16" Wood
W	10.7" (27.1cm)	13.8" (35.0cm)	17.8" (45.1cm)	11.6" (29.5cm)	13.3" (33.8cm)	19.6" (49.9cm)
W2	9.5" (24.2cm)	12.6" (32.0cm)	16.3" (41.5cm)	9.5" (24.2cm)	12.6" (32.0cm)	16.5" (41.5cm)
D	2.4" (6.2cm)	2.4" (6.2cm)	2.4" (6.4cm)	D* = 2.4" (6.2cm)	D* = 2.4" (6.2cm)	D* = 2.4" (6.4cm)
D2	1.7" (4.2cm)	1.7" (4.4cm)	1.7" (4.4cm)	D2* = 2.7" (6.8cm)	D2* = 2.7" (6.8cm)	D2* = 2.7" (6.8cm)
Shipping Weight:	2 lbs (0.9kg)	3 lbs (1.4 kg)	4 lbs (1.8 kg)	3 lbs (kg)	4 lbs (1.8 kg)	6 lbs (2.7 kg)
Double/Dual Mount Dimensions:	Not Applicable	W3 = 6.6" (16.7cm) D3 = 6.4" (16.2cm)	W3 = 6.6" (16.7cm) D3 = 6.4" (16.3cm)	Not Applicable	Not Applicable	Not Applicable
Adjustable Pole Height:	Not Applicable	H = 20.2" (51.5cm) = 18.6" (47.3cm) = 17.0" (43.2cm)	H = 22.3" (56.6cm) = 20.6" (52.4cm) = 19.0" (48.2cm)	Not Applicable	Not Applicable	Not Applicable

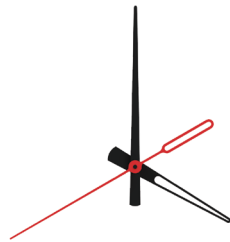
***NOTE:** For wood clocks, the rim (D2) protrudes further from the wall than the crystal (D).

SSIAW Series Wi-Fi Round Clock (V1.3)

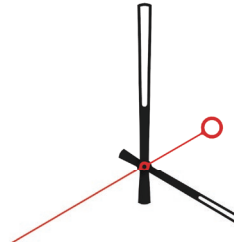
Hand & Dial Options



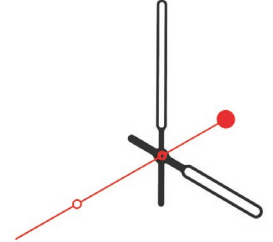
Standard Hands



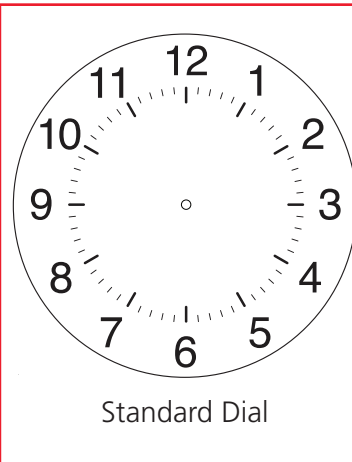
Specialty Hands 1



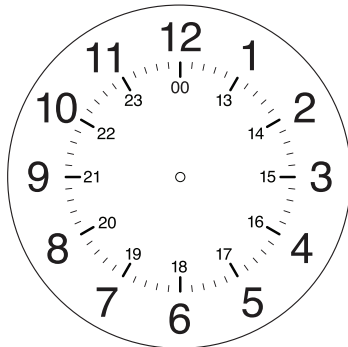
Specialty Hands 2



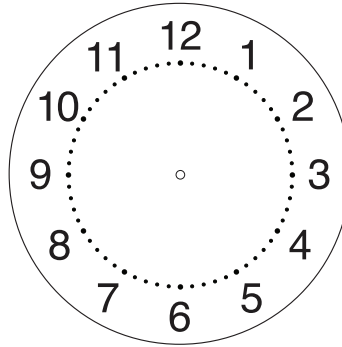
Specialty Hands 3



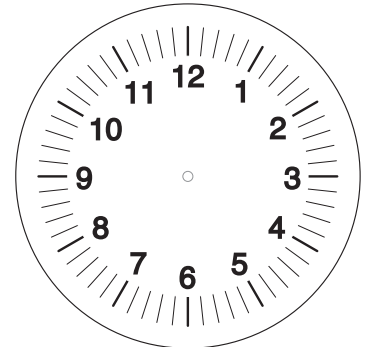
Standard Dial



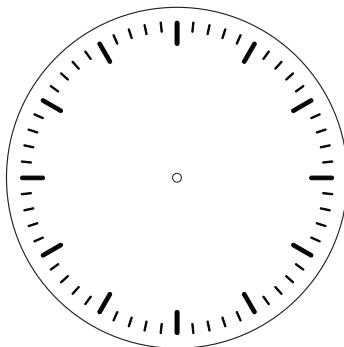
Dial M
(Military 24 Hours)



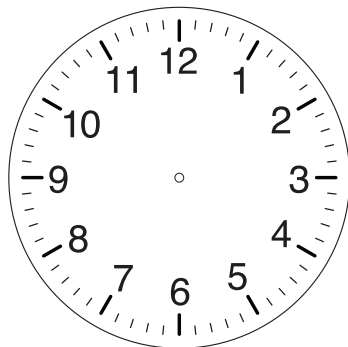
Dial A



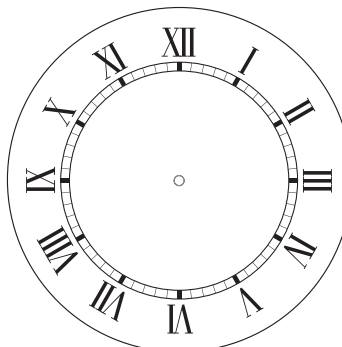
Dial B



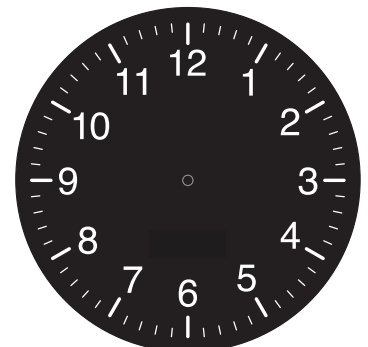
Dial C



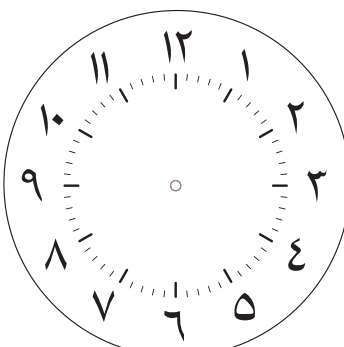
Dial D



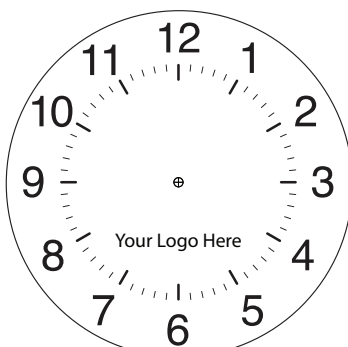
Dial E



Dial F



Dial G



Dial Z

Specialty Hands 1-3 & Specialty Dials A-Z are offered at an additional cost.

For more information please contact your Simplex Representative.

specification sheets may change without prior notice

SSIAW Series Wi-Fi Round Clock (V1.3)

Clock Case Options



Standard SlimLine
ABS Case



Brushed Aluminum Finish



Solid Wood Case Cherry Finish

